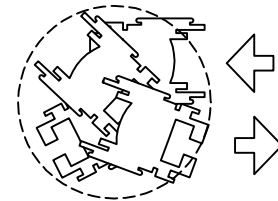
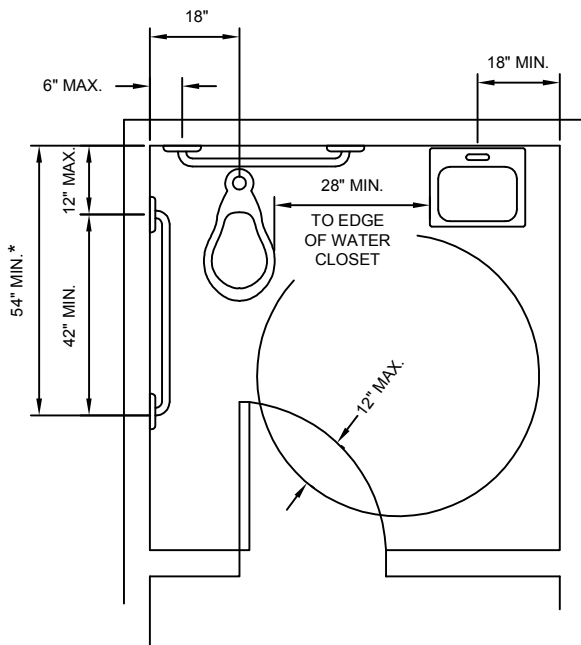


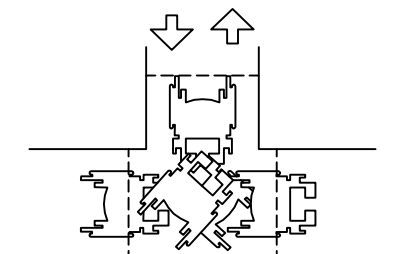
NOTE: REGARDLESS OF STALL CONFIGURATION, A 48" LONG MINIMUM CLEARANCE FLOOR SPACE SHALL BE PROVIDED IN FRONT OF THE WATER CLOSET.

NOTE: INTERIOR DIMENSIONS OF SINGLE ACCOMMODATION TOILET ROOMS SHALL INCLUDE A CLEAR FLOOR SPACE OF AT LEAST 60" IN DIAMETER OR A T-SHAPED CLEAR SPACE. NO DOOR MAY ENCROACH INTO THIS REQUIRED CLEAR SPACE BY MORE THAN 12".

* - SIDE GRAB BARS IN SINGLE ACCOMMODATION TOILET ROOMS MUST BE INSTALLED SUCH THAT THE FRONT END OF THE BAR IS LOCATED A MINIMUM OF 54" FROM THE BACK WALL.




60" DIAMETER SPACE



T-SHAPED SPACE

SINGLE ACCOMMODATION TOILETS

	STANFORD UNIVERSITY FACILITY OPERATIONS		DWG.	
	Drawing Title: SINGLE ACCOMMODATION TOILET			AC-33
	Scale: NTS	Check:	Rev. By: JEM Rev. Date: 05/21/99	